

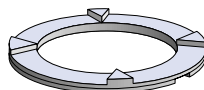
B36 Thermo* 4500/4600/TSQ® Accessories

Springs for Thermo MAT Mass Specs

The lens retainer spring, spring detent, ion volume spring and solid inlet springs, for Thermo 4500 & 4600's are manufactured by S.I.S. and made from tungsten wire. This gives them much more spring than those supplied by Thermo Scientific.

Part No.	Thermo No.	Description	Price ea.
LRS1	40005-20160	Lens Retainer Spring	
SPRDT	40005-20220	Spring Detent	
FP8	10007-20030	Solids Inlet Spring	
FP9	40005-20170	Ion Volume Spring	

Lens Castle Ceramic



This lens castle for Thermo 4500 mass specs is manufactured from BeO identical to the Thermo originals, #40005-20060 and #40005-20061.

Part No.	Description	Price ea.
BE1	4500 Lens Castle Assembly	
	Qty. of 3 or more	

4000/4500 Solid Inlet Valve Bellows Assembly

The entire solid inlet valve bellows assembly for the Thermo 4000 and 4500 solid probe inlet valve is available as a complete unit should the stainless steel bellows become damaged or develop a leak. The complete assembly is supplied as pictured including the sealing 'O' ring.

SIV4000



Part No.	Description	Price ea.
SIV4000	Solid Inlet Bellows Assembly	

TSQ® 70 Ion Gauge Tubes

These Bayard-Alpert type ion gauge tubes (Thermo #00105-01500) are a direct replacement for ion gauge tubes used on all models of Thermo Mass Spectrometers.



G75K

Part No.	Description	Price ea.
G75K	Ion Gauge Tube	

Thermo MAT Electrospray Accessories

Accessories for electrospray on the Thermo TSQ instruments are available from SIS. Accessories such as PEEK tubing and ferrules, and small diameter fused silica tubing are now available from stock. For a complete selection of PEEK ferrules and fittings see the LC section of this catalog. If you would like a different size of fused silica tubing or if you do not see an item you need, please give us a call.

*When "Thermo" is indicated, it is intended to imply "Thermo Fisher Scientific Corp"

Filament Lead Assembly and Collector Lead Assembly

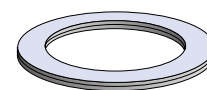
New filament lead (Thermo #40005-60280) and Collector Lead (Thermo #40005-60250) assemblies are manufactured by S.I.S. Complete assembly includes ceramic insulator and electrical connectors.



FL1

Part No.	Thermo No.	Description	Price ea.
FL1	40005-60280	Filament Lead Assembly	
FL2	40005-60250	Collector Lead Assembly	

Lens Retainer Ring



The lens retainer ring for the Thermo 4500 is available from S.I.S. This corresponds to the Thermo part #40005-20070 and is constructed of beryllium oxide ceramic. Alternatively, a Lens Retainer Ring constructed of aluminum oxide, is also available.

Part No.	Description	Price ea.
BE2	Beryllium Oxide Lens Retainer Ring	
	3 or more	
CE2	Aluminum Oxide Lens Retainer Ring	
	3 or more	

TSQ® 70 Ion Gauge Flange

The Ion Gauge Flange for the Thermo MAT TSQ®70 is available new from S.I.S. The flange includes the Cajon O'Ring fitting and high voltage single pin feedthrough.



IGF70

Part No.	Description	Price ea.
IGF70	Ion Gauge Flange TSQ®70	

Ion Gauge Tube for 20KV Dynode Upgrade (Thermo #00105-01510)

A high sensitivity ion gauge tube is used on the TSQ instruments which have the 20 KV dynode upgrade. This tube has an internal coating of platinum on the glass for improved performance. It is available with kovar tubulation.



G75KH5

Part No.	Description	Price ea.
G75KHS	Hi Sensitivity 1.6 Tube Kovar	