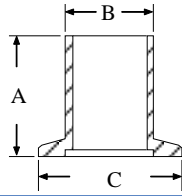


F66 Custom NW Pump Fittings

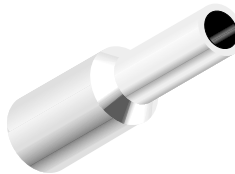
Long Nipples-Aluminum



Part No.	For NW Flange	For Hose I.D. (in.)	Dimensions (mm) a x b x c	Price each
NS16075	16	.75"	30 x 19.8 x 30	
NS16050	16	.5"	30 x 12.3 x 30	
NS16025	16	.25"	30 x 6.4 x 30	
NS20100	20	1"	35 x 25.4 x 40	
NS20075	20	.75"	35 x 19.8 x 40	
NS20050	20	.5"	35 x 12.3 x 40	
NS25150	25	1.5"	35 x 38.0 x 40	
NS25125	25	1.25"	35 x 31.7 x 40	
NS25100	25	1"	35 x 25.4 x 40	
NS25075	25	.75"	35 x 19.8 x 40	
NS25050	25	.5"	35 x 12.3 x 40	
NS25025	25	.25"	35 x 6.35 x 40	
NS32150	32	1.5"	40 x 38.1 x 55	
NS32100	32	1"	40 x 25.4 x 55	
NS32075	32	.75"	40 x 19.8 x 55	
NS32050	32	.5"	40 x 12.3 x 55	
NS40150	40	1.5"	40 x 38.1 x 55	
NS40100	40	1"	40 x 25.4 x 55	
NS40075	40	.75"	40 x 19.8 x 55	
NS40050	40	.5"	40 x 12.3 x 55	

Hose Unions

Aluminum Hose Unions are used to splice vacuum hoses to reduce or increase size. Other sizes can be custom manufactured by S.I.S.™.



Part No.	Dimensions (in.) (a x b x l)	Price ea.
HU25100	.25 x 1 x 3.0	
HU2575	.25 X .75 X 3.0	
HU2550	.25 X .5 X 3.0	
HU5050	.5 x .5 x 3.0	
HU5075	.5 x .75 x 3.0	
HU50100	.5 x 1 x 3.0	
HU7575	.75 x .75 x 3.0	
HU75100	.75 x 1 x 3.0	
HU75125	.75 x 1.25 x 3.0	
HU100100	1 x 1 x 3.5	
HU100125	1 x 1.25 x 3.5	
HU100150	1 x 1.5 x 3.5	
HU125125	1.25 x 1.25 x 4.0	
HU125150	1.25 x 1.5 x 4.0	
HU125200	1.25 x 2 x 4.0	
HU150150	1.5 x 1.5 x 4.0	
HU150200	1.5 x 2 x 4.0	
HU200200	2 x 2 x 4.0	

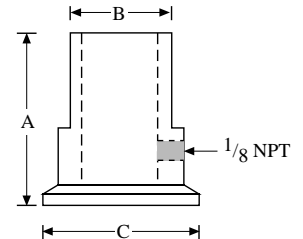
Extra Long Nipples

These aluminum hose nipples have longer stems for better multiple clamping of vacuum hose. Other sizes and lengths can be custom manufactured by S.I.S.

Part No.	For NW Flange	For Hose I.D. (in.)	Dimensions (mm) a x b x c	Price each
LS16075	16	.75	58 x 19.8 x 30	
LS16050	16	.5	58 x 12.3 x 30	
LS20100	20	1	58 x 25.4 x 40	
LS20075	20	.75	58 x 19.8 x 40	
LS20050	20	.5	58 x 12.3 x 40	
LS25125	25	1.25	58 x 31.7 x 40	
LS25100	25	1	58 x 25.4 x 40	
LS25075	25	.75	58 x 19.8 x 40	
LS25050	25	.5	58 x 12.3 x 40	
LS32150	32	1.5	60 x 38.1 x 55	
LS32100	32	1	60 x 25.4 x 55	
LS32075	32	.75	60 x 19.8 x 55	
LS32050	32	1/2	60 x 12.3 x 55	
LS40150	40	1.5	60 x 38.1 x 55	
LS40100	40	1	60 x 25.4 x 55	
LS40075	40	.75	60 x 19.8 x 55	

Pump Nipples With Side Port

Aluminum Long Nipples with 1/8" NPT tap in the side for the addition of gauge tubes. Ideal for attaching Thermocouple Gauge Tubes to monitor vacuum pumps. Other sizes can be custom manufactured by S.I.S.



Part No.	For NW Flange	For Hose I.D. (in.)	Dimensions (mm.) a x b x c	Price each
NT16075	16	.75	45 x 19.8 x 30	
NT16050	16	.5	45 x 12.3 x 30	
NT20100	20	1	50 x 25.4 x 30	
NT20075	20	.75	50 x 19.8 x 40	
NT20050	20	.5	50 x 12.3 x 40	
NT25125	25	1.25	50 x 31.7 x 40	
NT25100	25	1	50 x 25.4 x 40	
NT25075	25	.75	50 x 19.8 x 40	
NT25050	25	.5	50 x 12.3 x 40	
NT32150	32	1.5	55 x 38.1 x 55	
NT32125	32	1.25	55 x 31.7 x 55	
NT32100	32	1	55 x 25.4 x 55	
NT32075	32	.75	55 x 19.8 x 55	
NT32050	32	.5	55 x 12.3 x 55	
NT40150	40	1.5	55 x 38.1 x 55	
NT40125	40	1.25	55 x 31.7 x 55	
NT40100	40	1	55 x 25.4 x 55	
NT40075	40	.75	55 x 19.8 x 55	
NT50200	50	2	65 x 50.0 x 75	
NT50150	50	1.5	65 x 38.1 x 75	
NT50100	50	1	65 x 25.4 x 75	