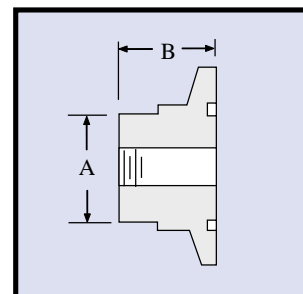


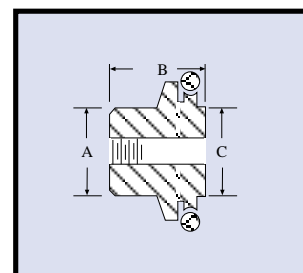
Flange Adapter to 1/4" NPT, Aluminum

Part No.	A	B	NW Flange Size	Price ea.
QF10-050-AP25	.62"	.75"	10	
QF16-075-AP25	.62"	.75"	16	
QF25-100-AP25	.88"	.75"	25	
QF40-150-AP25	1.25"	1.00"	40	
QF50-200-AP25	1.75"	1.00"	50	



Flange Adapter to 1/4" NPT, Aluminum with O-ring Attached

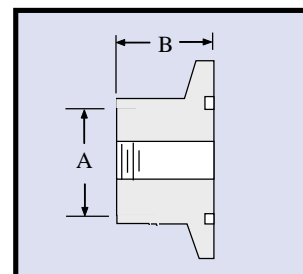
Part No.	A	B	C	NW Flange Size	Price ea.
QF25x14NPT	1.092"	1.00"	1.022	25	



Flange Adapter to 1/2" NPT, Stainless

NW flange with 1/2" NPT, for fittings such as our CSS-AC100-50 Carbon Filter to Vacuum Pumps.

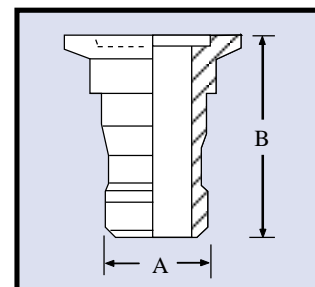
Part No.	A	B	NW Flange Size	Price ea.
QF25xSP50	1.00"	.75"	25	
QF40xSP50	1.00"	.75"	25	



Hose Adapter, Aluminum

For connecting rubber or plastic hose to NW flanges. Compatible with most standard vacuum hose diameters.

Part No.	Hose Size	A	B	NW Flange Size	Price ea.
QF10-050-H	.5" or .625"	.63"	1.65"	10	
QF16-050-H	.5" or .625"	.63"	1.65"	16	
QF16-075-H	.625" or .75"	.75"	1.65"	16	
QF25-100-H	.75" or .875"	.88"	1.73"	25	
QF40-150-H	1.5" or 1.625"	1.63"	2.17"	40	
QF50-200-H	1.5" or 1.625"	1.63"	2.17"	50	



QF to QF Reducers, 304 Stainless

Union for connecting two different size NW flanges.

Part No.	Tube Size	A	F1	F2	NW Flange Size	Price ea.
QF25x16	1" x .5" & .75"	.63"	1.57"	1.18"	25 to 16	
QF40x16	1.5" x .5" & .75"	.63"	2.16"	1.18"	40 to 16	
QF50x16	2" x .5" & .75"	.63"	2.95"	1.18"	50 to 16	
QF40x25	1.5" x 1"	.88"	2.16"	1.57"	40 to 25	
QF50x25	2" x 1"	.88"	2.95"	1.57"	50 to 25	
QF50x40	2" x 1.5"	1.38"	2.95"	2.16"	50 to 40	

