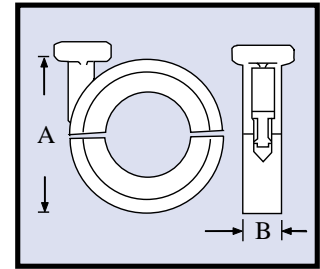


Quick Flange Clamp, Aluminum

Quick action aluminum clamp with finger closure "T" knob for positive sealing of NW flanges.

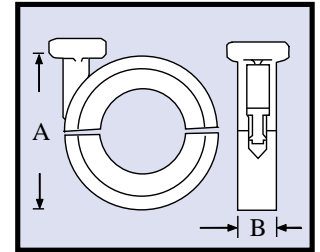
Part No.	Tube Size	A	B	NW Flange Size	Price
QF16-075-C	.5" & .75"	1.94"	.625"	16	
QF25-100-C	1"	2.45"	.625"	25	
QF40-150-C	1.5"	2.94"	.625"	40	
QF50-200-C	2"	3.94"	.625"	50	



Quick Flange Clamp, Stainless

For use on ultra high vacuum or corrosive applications.

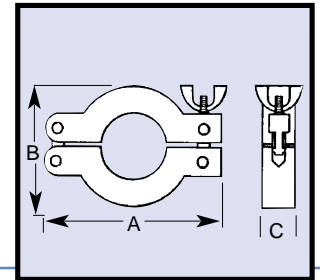
Part No.	Tube Size	A	B	NW Flange Size	Price
QF16-075-CS	.5" & .75"	1.94"	.625"	16	
QF25-100-CS	1"	2.45"	.625"	25	
QF40-150-CS	1.5"	2.94"	.625"	40	
QF50-200-CS	2"	3.94"	.625"	50	



Wing-Nut Aluminum Clamp

Industry standard die-cast aluminum clamp.

Part No.	Tube Size	A	B	C	NW Flange Size	Price
QF16-075-CW	.5" & .75"	2.45"	1.67"	.65"	16	
QF25-100-CW	1"	2.86"	2.16"	.65"	25	
QF40-150-CW	1.5"	3.53"	2.73"	.65"	40	
QF50-200-CW	2"	4.80"	3.70"	.65"	50	

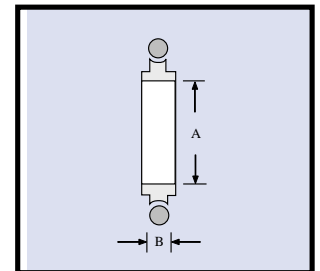


Centering Ring Assembly, 304 Stainless

Available with Viton or Buna O-ring, this centering ring complete with O-ring should be used when joining any two NW flanges with a quick flange clamp.

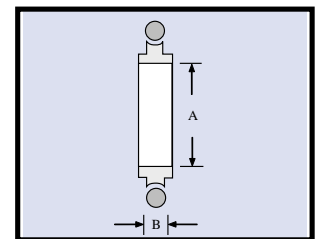
Buna is 100°C max. and Viton is 200°C max.

A	B	NW Flange Size	Part No.	
			Buna-N (B)	Viton- V
.39"	.21"	10	QF10-050-SR-B	QF10-050-SR-V
.63"	.21"	16	QF16-075-SR-B	QF16-075-SR-V
.98"	.21"	25	QF25-100-SR-B	QF25-100-SR-V
1.53"	.21"	40	QF40-150-SR-B	QF40-150-SR-V
1.97"	.21"	50	QF50-200-SR-B	QF50-200-SR-V



Centering Ring Assembly, Aluminum

A	B	NW Flange Size	Part No.	
			Buna-N (B)	Viton- V
.39"	.21"	10	QF10-050-AR-B	QF10-050-AR-V
.63"	.21"	16	QF16-075-AR-B	QF16-075-AR-V
.98"	.21"	25	QF25-100-AR-B	QF25-100-AR-V
1.53"	.21"	40	QF40-150-AR-B	QF40-150-AR-V
1.97"	.21"	50	QF50-200-AR-B	QF50-200-AR-V



Centering Ring Assembly, 304 Stainless With Screen

(features Viton O'Ring and 72 mesh screen)

Part No.	A	B	NW Flange Size	Price ea.
QF16-075-SRV-SM	.50"	.21"	16	
QF25-100-SRV-SM	.86"	.21"	25	
QF40-150-SRV-SM	1.45"	.21"	40	
QF50-200-SRV-SM	1.88"	.21"	50	

