

# B46 Kratos MS Accessories

## Kratos MS-80 Filaments & Traps

Scientific Instrument Services™ manufactures filaments and traps for the Kratos MS-80 with a design and construction similar to the originals. The filament, S.I.S. No. KMS-1, matches Kratos No. 58-825, and the trap, S.I.S. No. KMS-2, matches Kratos No. 58-826.

S.I.S. also offers these filaments and traps made with a durable Vespel base. The KMS4 is a trap with the Vespel base and KMS5 is a filament with a Vespel base.



Part No.	Kratos #	Description	Price ea.
KMS-1	58-825	S.I.S. Kratos MS-80 filaments	
KMS-2	58-826	S.I.S. Kratos MS-80 Trap	
KMS-4		Trap w/Vespel Base	
KMS-5		Filament w/Vespel Base	

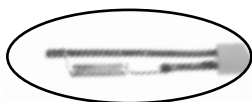
## Gold Gaskets for Kratos Mass Spec

The following wire gaskets are available from S.I.S. All are constructed from .020" gold wire. See the section on gold gaskets for any sizes not listed below.

Part No.	Description	Price ea.
01-503	0.75" I.D. Gold Gasket	
01-502	0.8125" I.D. Gold Gasket	
01-594	1.00" I.D. Gold Gasket	
01-510	1.125" I.D. Gold Gasket	
01-557	1.25" I.D. Gold Gasket	
01-508	1.50" I.D. Gold Gasket	
01-504	2.25" I.D. Gold Gasket	
01-651	4.50" I.D. Gold Gasket	
01-501	4.75" I.D. Gold Gasket	
01-750	5.50" I.D. Gold Gasket	
01-757	99.9 mm I.D. Gold Gasket	

## DCI Probe Tip

Enlarged Tip



The new Kratos DCI filaments are available from S.I.S. These are retrofits for the original filaments from Kratos. The filaments come complete with ceramic support and platinum filament heater coil, ready for immediate use.

Part No.	Description	Price ea.
KMS3	Kratos DCI Filament	

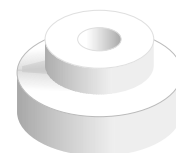
## MS80 Temperature Sensor

The temperature sensor used in the Kratos MS80 source is available. It is a 50 ohm platinum resistance thermometer.

Part No.	Description	Price ea.
PTF	MS80 Temperature Sensor	

## Ceramic Insulators

The following ceramic insulator is available for the Kratos mass spec. Others are available on special request.

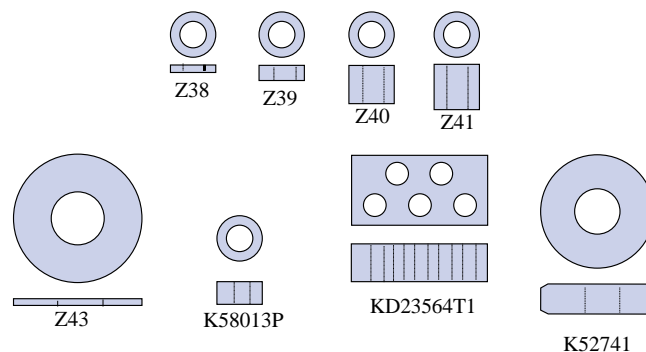


Z30 Stepped Washer O.D. = .277" I.D. = .116"

Part No.	Kratos #	Description	Price ea.
Z30	58-827	Kratos Repeller insulator	

## Kratos Concept MS Ceramics

The following alumina ceramic insulators are offered to replace the fragile quartz Kratos originals, except K58013P which is quartz.



Part No.	Kratos #	OD*	ID*	L*
Z38	58-636	6.0	3.5	1.0
Z39	58-028	6.0	3.5	2.0
Z40	58-055	6.0	3.5	5.0
Z41	58-037	6.0	3.5	6.0
K58013P	58-013	6.0	3.5	3.0
KD23564T1	D23564T1	Contractor Block		
K52741	52-741	15.0	6.0	4.0
Z43		17.0	7.0	0.9

\* Dimensions in millimeters