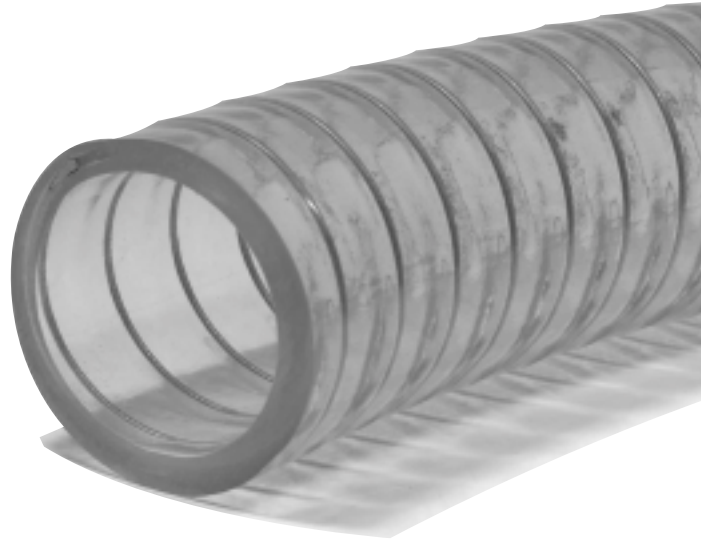


## Steel Wire Reinforced Vacuum Hose

- Spiral steel wire reinforcement encapsulated within wall of hose
- For use in both Pressure and Vacuum applications
- Recommended for Vacuum Pumps on Mass Spectrometers
- Full Vacuum Rating to 29.9 in. Hg
- Kink and Crush Resistant
- Clear Tubing for Viewing Contents
- Flame Resistant
- Wire Molded Within Hose
- Light Weight but tough and abrasion resistant
- Bend Radius 4 times I.D.
- Chemical Resistant
- Usable Temperature Range: 25°F to 175°F

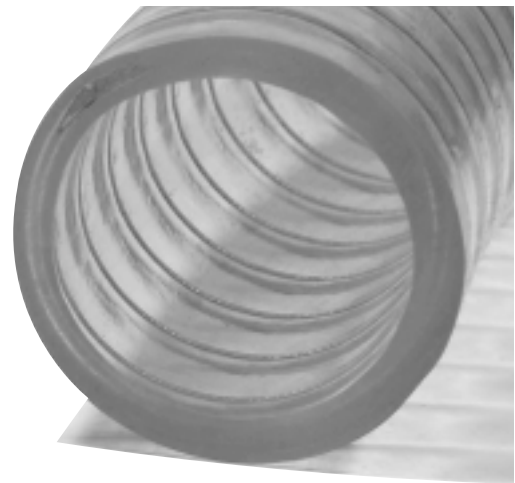


Steel Wire Reinforced Vacuum Hose

This Steel Wire Reinforce PVC Vacuum Hose is made from food grade PVC tubing and reinforced with 110 ton psi steel spring wire. The high tensile strength steel wire is encapsulated within the wall of the PVC vacuum hose to eliminate corrosion and interaction with chemicals. Its one piece construction is the result of a unique process that embeds the spring wire reinforcement within the walls of the hose, resulting in a homogeneous mass. There are no separate layers of laminated plies. As a result, chemicals and gases cannot attack the metal spring wire and the hose retains its strong anti-collapsible features under both high pressure and low vacuum applications. This hose is chemical, ozone, atmospheric and flame resistant as well as self extinguishing

The applications of this hose include all vacuum lines, food and beverage dispensing, coolant lines, and oil and fuel lines. The construction of this hose makes it ideal for use on the vacuum pumps on mass spectrometers and other scientific instruments, where resistance to kinking and chemical purity are important.

Available in lengths of 1 to 99 feet or purchase in 100 foot rolls for additional savings.



Reinforcing wire is encapsulated within the walls of the vacuum hose

### SPECIFICATIONS

Chemical Content	.....Polyvinyl Chloride
Tensile Strength	.....2,200 - 2,800 PSF
Working Temperature	.....25° to 150°F
Fire Resistance	.....Self Extinguishing
Steel Reinforcement	.....110 ton PSI
Radius of Curvature	.....4 times I.D.
Vacuum Rating	.....299 in. Hg.
Burst Rating	.....210 - 420 psi

Product No.	Description	I.D.	O.D.	Wall
H25-1	0.25" I.D. S.W. Vacuum Hose	0.25"	0.453"	0.10"
H37	0.375" I.D. S.W. Vacuum Hose	0.375"	0.61"	0.12"
H50	0.50" I.D. S.W. Vacuum Hose	0.50"	0.748"	0.12"
H60	0.625" I.D. S.W. Vacuum Hose	0.625"	.906"	0.14"
H80	0.75" I.D. S.W. Vacuum Hose	0.75"	1.024"	0.14"
H90	1.0" I.D. S.W. Vacuum Hose	1.00"	1.319"	0.16"
H92	1.25" I.D. S.W. Vacuum Hose	1.25"	1.634"	0.19"
H95	1.5" I.D. S.W. Vacuum Hose	1.50"	1.909"	0.21"
H100	2.0" I.D. S.W. Vacuum Hose	2.00"	2.382"	0.19"