

Description

The Wiley Registry of Mass Spectral Data continues to be the reference library of choice on most GC/MS instrument data systems where the identification of unknown compounds is of critical importance. Each instrument vendor (Table 2) typically has their own library file format. Users who wish to either add the Wiley Registry to an existing GC/MS data system or install the Registry on a PC running Microsoft Windows may purchase the Wiley AccessPak which contains the Wiley Registry in versions pre-formatted for most GC/MS instruments (See below). In addition, the Wiley AccessPak installs the Mass Spectral Browser Microsoft Windows application to query and display mass spectra and chemical structures contained in the Wiley Registry.

Wiley AccessPak Browser

The Wiley AccessPak Browser is a Microsoft Windows application for querying, retrieving displaying mass spectra and structures from the Wiley Registry. The Wiley AccessPak Browser can retrieve spectra based on combinations of the following criteria:

- serial number
- CAS number
- molecular weight
- exact molecular weight
- elemental composition
- name prefix/fragment
- peak m/z, abundance
- neutral loss
- unsaturations (r+db)

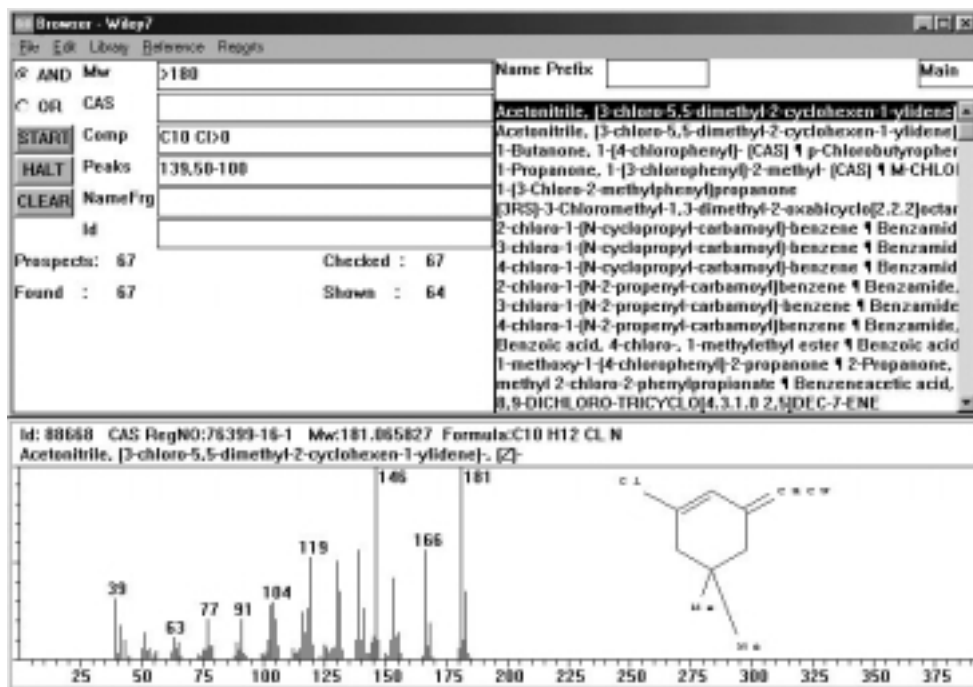


Figure 1. The AccessPak Browser, an application to query and display the Wiley Registry of Mass Spectral Data.

System Requirements

Microsoft Windows XP//2000/NT, CD-ROM, 1GB free disk space recommended. Wiley 8 is available in the following MS data system formats. Please specify the format you need during the time of order.

- | | | | |
|---------------------|-------------------|---------------------------|---------------------|
| • Thermo ICIS | • Fisons MassLab | • NIST | • Shrader |
| • Thermo INCOS | • Fisons Lab Base | • Palisade BenchTop/PBM | • Varian Saturn |
| • Thermo GCQ/Magnum | • HP ChemStation | • Perkin Elmer TurboMass | • Vector/2 |
| • Thermo MassLab | • Hitachi 3DQ | • Shimadzu GCMS Solutions | • Waters Millennium |
| • Thermo XCalibur | • JEOL GCMate | • Shimadzu Class5K | |

Total spectra	399,383
Spectra Type	70eV EI mass spectra
Unique compounds	310,000
CAS assignments	246,000
Spectra w/ drawn structures	182,000
Chemical names	2M
Disk storage (Palisade Format)	450 MB
Media availability	CD-ROM
Avg Library Search Time	<1 sec

Part No.	Description	Price
WILEYW8AP	WILEY 8th Edition	
WILEYW8UP	Upgrade from Wiley 7th Edition	