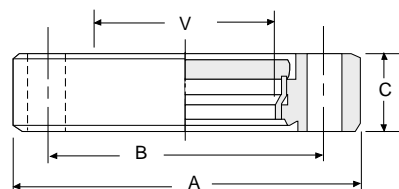


Zero Profile, Wide-Angle Viewports,

7056 Glass with Kovar sleeves and stainless steel flanges



Part No.	Viewing Dia.	Nom. Flange Size	Flange O.D.(A)	Bolt Circle Diam.(B)	Flange Thickness(C)	Glass Thickness	Price
133-ZVP	.625"	1 1/3"	1.33"	1.062"	.285"	.062"	
212-ZVP	.625"	2 1/8"	2.12"	1.625"	.470"	.062"	
275-ZVP	1.40"	2 3/4"	2.73"	2.312"	.500"	.125"	
338-ZVP	1.40"	3 3/8"	3.37"	2.850"	.625"	.175"	
450-ZVP	2.69"	4 1/2"	4.47"	3.628"	.680"	.175"	
462-ZVP	2.69"	4 5/8"	4.62"	4.030"	.750"	.175"	
600-ZVP	3.88"	6"	5.97"	5.128"	.780"	.210"	

Socket Head Cap Screws



Part No.	Bolt Size	Fits Flange #	Price / Pkg of 10
SHS832050	8-32 x 1/2	F133000T	
SHS832075	8-32 x 3/4	F133000	
SHS14088	1/4-28 x 7/8	F218000T, F275000T	
SHS14125	1/4-28 x 1 1/4	F218000, F275000	
SHS516125	5/16-24 x 1 1/4	F450000T, F458000T, F600000T	
SHS516200	5/16-24 x 2	F450000, F458000, F600000	

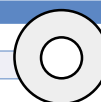
Cap Screw Nuts

Part No.	Description	Price / Pkg of 100
SR35	Stainless Steel Hex Nuts 8-32	
SR37	Stainless Steel Hex Nuts 1/4-28	
SR38	Stainless Steel Hex Nuts 5/16-24	



Stainless Steel Washers - Flat

Part No.	Description	Price / Pkg of 100
SR26	8-32 Flat Stainless Steel Washer	
SR28	1/4-28 Flat Stainless Steel Washer	
SR29	5/16-24 Flat Stainless Steel Washer	



Copper Gaskets for Vacuum Flanges

The below listed vacuum flange copper gaskets are made from OFHC copper. All gaskets are .080 inches thick and fit the nominal flange sizes listed below. The gold plated copper gaskets for the Thermo Fisher Scientific ITD are also listed below.

Part No.	O.D.	I.D.	Fits Flange Size	Price each	Price/10
CG-300	0.85"	0.63"	1.33"		
CG-400	1.31"	1.00"	2.125"		
CG-500	1.90"	1.45"	2.75"		
CG-700	2.43"	2.00"	3.375"		
CG-1000	3.24"	2.50"	4.50"		
CG-275	3.24"	2.80"	4.50"		
CG-1200	3.74"	3.00"	4.625"		
CG-1500	4.74"	4.00"	6.00"		
CG-1800	5.74"	5.00"	6.75"		
CG-1900	6.74"	6.00"	8.00"		
CG-1950	8.74"	8.00"	10.00"		
CG275GP*	3.24"	2.80"	4.50"		
CG400GP*	1.31"	1.00"	2.125"		
CG500GP	1.90"	1.45"	2.75"		