

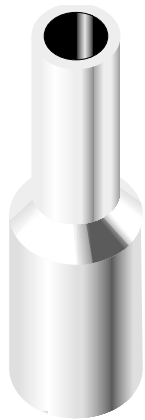
F48 Koby® Vacuum Pump Charcoal Trapping Exhaust Filters



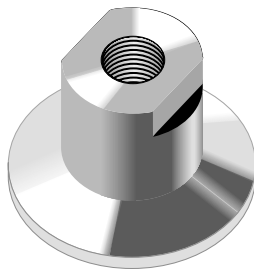
The Koby air purifiers can be mounted in various configurations depending on your vacuum system requirements. The air purifier can be fitted with a QF25100SP25 fitting to enable it to mount directly on top of the exhaust port on the Alcatel vacuum pump. The rubber flap should be removed from the vacuum pump exhaust port.



The Koby air purifier does not need to be placed directly on top of the vacuum pump. In many systems where space is limited, it is more convenient to attach a hose to the pump exhaust port and then using a KF-1, KF-2, or KF-3 fitting, adapt the Koby air purifier to fit the hose. It is also practical, using these same fittings, to run a hose or vacuum line from the top or exit nipple of the air purifier to exhaust any remaining contaminants to a hood or building exhaust system.



KF-1



QF25100SP25



KF-2



KF-3

Fittings to Adapt Koby Air Purifier to various connectors

See the following page for details on installation with Alcatel Oil Mist Eliminator.

Part No.	Description	Price
KA-1	Koby Vacuum Pump Air Filter When purchasing 10 or more	
KA-2	Koby Filter Junior King When purchasing 10 or more	
DFO	3/4" Exhaust Muffler Filter, 35cfm Discharge Rate Max	
KF-1	1/4" pipe tp 1/2" hose fitting	
KF-2	1/4" pipe to 3/4" hose fitting	
KF-3	1/4" pipe to 1" hose fitting	
QF25100SP25	1/4" pipe to NW25 flange	
KF-5	1/4" NPT to 1/4" hose fitting	

Purifier Life

Koby Air Purifiers do not have a visual change element and must be replaced periodically to insure efficient adsorption and filtration of compressed air impurities. For best performance, KA-1 filters should be replaced after 30 days, the KA-2 filters after 60 days of use or sooner, when air sampling indicates outward air quality has reached an unacceptable level. Actual purifier life can vary depending on flow rate, concentration of contaminants, and operation temperature. Purifiers will not deteriorate when not in use.

Fittings - standard fittings on filters are 1/4" NPT. Optional fittings shown at left are available to adapt filters to pumps to various hoses and flanges.