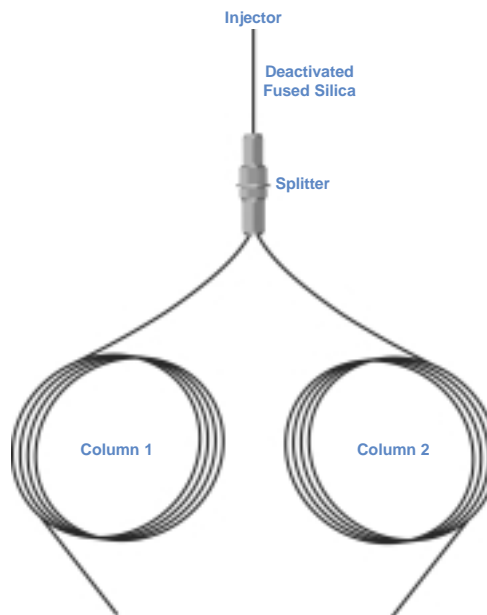


D36 Capillary Column Splitters

Fixed Inlet Splitter for Capillary Columns

- Splits an injection between two capillary columns
- Fixed split ratio
- Detector sensitivity is maintained
- Splitter is supplied complete with tubing, ferrules and nuts required for installation
- Inert glass lined tubing (GLT™) flow path
- Low dead volume
- Can be used for all capillary columns (0.1 - 0.53mm I.D.)



Where an injected sample is to be split between two capillary columns for simultaneous analysis, the fixed inlet splitter is recommended. The low internal volume, glass lined tubing design ensures an inert low dead volume connection.

The two capillary columns used (usually differing in polarity) must have the same length and inside diameter to obtain equal sample splitting.

Three kits are available to suit 0.22, 0.32 and 0.53mm I.D. capillary columns. The kits consist of a special GLT™ lined union and all ferrules required for installation.

Part No.	Column I.D.	Pack Size	Price
Inlet Capillary Column Splitter			
123632	0.1 - 0.25mm	1	
123633	0.32mm	1	
123634	0.45 - 0.53mm	1	
Replacement Ferrules			
072662	0.1 - 0.25mm (2 hole ferrule)	10	
072664	0.32mm (2 hole ferrule)	10	
072655	0.45 - 0.53mm (1 hole ferrule)	10	

Fixed outlet splitter for capillary columns

The splitter will provide ratios from 1:1 up to 1:10 by selecting appropriate lengths of the fused silica transfer lines to the detectors. (If the transfer line lengths and ID's are the same, a 1:1 split will be achieved).

The VSOS consists of a special GLT™ union with locknut, 0.4mm ID two-hole ferrules (GVF2/004), 0.5mm ID single-hole ferrules (GVF/005) and a 5 metre length of 0.22mm ID deactivated fused silica tubing.

- Designed for splitting the flow from one capillary column to two detectors
- Glass lined tubing (GLT™) splitter union for inertness
- Splitter is supplied complete with tubing, ferrules and nuts required for installation
- Can be used for 0.1 - 0.32mm I.D. capillary columns
- For an outlet splitter for 0.53mm I.D. columns, **Part No. 123634** is recommended



Description	Part No.	Ratio	Pack Size	Price
Outlet Capillary Column Splitter		User-determined Split Ratio*		
	1861460	1:1**	1	
	1861461	1:5**	1	
	1861462	1:10**	1	
Replacement Tubing				
	18614600	1:1**	2	
	18614610	1:5**	2	
	18614620	1:10**	2	
Replacement 2-Hole Ferrules				
	072662	0.1 - 0.25mm I.D. Column	10	
	072664	0.32mm I.D. Column	10	

*Includes 5 meter length of 0.22mm I.D. deactivated fused silica tubing.

**Includes fused silica tubing pre fused into a 2-holed ferrule for preset split ratios.

