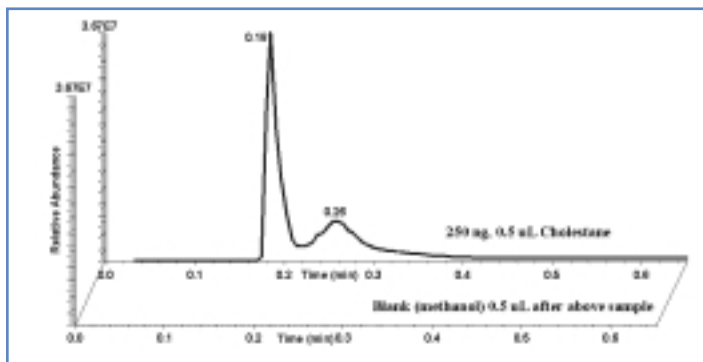
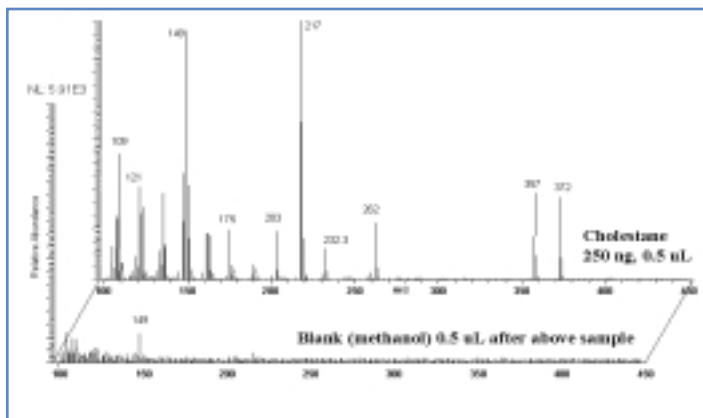


A technique is of little use if “cross contamination” or “memory effects” occur during sample analysis. This problem does not occur in the AutoProbe because the DEP wire is “baked out” at high temperatures between samples. The chromatograms below show the analysis of a 250 ng Cholestane sample dissolved in methanol. This analysis was repeated 5 times. The DEP coil was baked out at 900 mA for 15 seconds after each sample and then a blank clean methanol sample was analyzed. The blank injection produced a flat baseline with no carryover from the previous samples.

The charts below show the MS data at 0.18 minutes for the 250 ng of Cholestane and the blank methanol sample. Note that the scale on the blank methanol spectrum is 1000 times the scale of the 250 nanogram of Cholestane. No peaks were found in the blank sample that could be attributed to the Cholestane. In this study, as well as many others, it was confirmed that “memory effects” or “cross contamination” problems do not occur with the AutoProbe technique. It is recommended that the high temperature “bake out” be used in all analysis. A blank sample between analysis is optional.



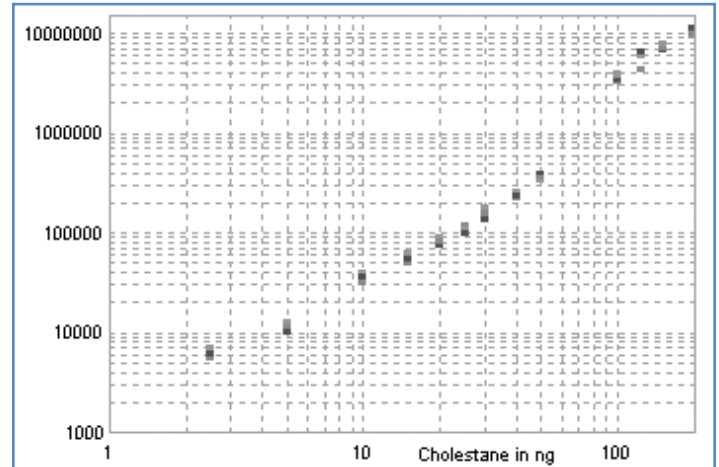
Background Check After Running Strong Samples



Background MS After Running 5 Consecutive Strong Samples

Sensitivity

Direct probe techniques are less sensitive than GC techniques because the probe peaks in the total ion chromatograph are comparatively much wider and therefore less intense. However, by utilizing the rapid temperature ramp capabilities of the AutoProbe, sample sizes less than one nanogram have been detected and identified.



Typical Calibration Curve for an Analyte Using the AutoProbe

Additional information is available on the web at:
www.sisweb.com/autoprobe

AutoProbe System Specifications & Requirements

Voltages

AutoProbe Console Voltage: 110 VAC or 220 VAC
Edwards Vacuum Pump: 110 VAC or 220 VAC

Compressed Air: minimum 60 psi

Mass Spectrometer System Requirements

Thermo TRACE DSQ™ or Polaris Q™ MS
 System with Xcalibur™ Software
 (Trace MS supported in our AP1000 AutoProbe)

Dimensions

Console without CTC PAL Autosampler:
 17" wide x 42" Deep x 16" High
Console with CTC PAL Autosampler:
 23" wide x 42" Deep x 37" High

Weight

Console Weight: 100 pounds

TRACE DSQ™, TRACE MS, Focus DSQ, DSQ II, Polaris Q™, Thermo™, Xcalibur™, and Open Access™ are Trademarks of Thermo Electron Corporation. - for mor information visit www.thermofinnigan.com

Part No.	Description	Price
AP2000	AutoProbe System	
AP20001	AutoProbe DCI Filament	
AP20002	Calibration Tip	
AP20004	AutoProbe Seal Set	