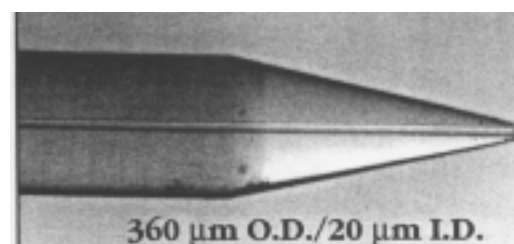
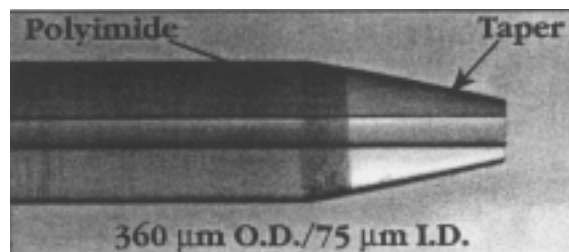


TaperTip™ - tips with an external taper only

- Operation at higher flow rates (0.3 to 1 μ l than PicoTips™)
- Polyimide coating extends to the taper region
- Mechanically durable tips - better withstands contact & handling
- Reduced particle clogging
- Stock number prefix: TT
- Available in a variety of tip diameters, up to 1 m long



Fused Silica TaperTips

Part Number	Tubing OD/ Tip ID (μ m)	Tip OD (μ m)	Tip OD Typical (μ m)	Tubing Length (cm)	Flow Range† (μ l/min)	Pieces Per Pkg.	Price
Coated Fused-silica TaperTip - Patent Pend. multilayer conductive coating applied to the tip end.							
TT360-100-50-CE-5	360/100	120-160	140	50	0.4 - 3	5	
TT360-75-50-CE-5	360/75	100-130	115	50	0.3 - 2	5	
TT360-50-50-CE-5	360/50	70-90	80	50	0.2 - 1	5	
TT360-20-50-CE-5	360/20	40-60	50	50	0.2 - 0.5	5	
TT150-50-50-CE-5	150/50	60-80	70	50	0.2 - 1	5	
Uncoated Fused-silica TaperTip							
TT360-100-50-N-5	360/100	120-160	140	50	0.4 - 3	5	
TT360-75-50-N-5	360/75	100-130	115	50	0.3 - 2	5	
TT360-50-50-N-5	360/50	70-90	80	50	0.2 - 1	5	
TT360-20-50-N-5	360/20	40-60	50	50	0.2 - 0.5	5	
TT150-50-50-N-5	150/50	60-80	70	50	0.2 - 1	5	
Distal Coated Fused-silica TaperTip							
TT360-100-50-D-5	360/100	120-160	140	5	0.4 - 3	5	
TT360-75-50-D-5	360/75	100-130	115	5	0.3 - 2	5	
TT360-50-50-D-5	360/50	70-90	80	5	0.2 - 1	5	
TT360-20-50-D-5	360/20	40-60	50	5	0.2 - 0.5	5	

*Frit material is borosilicate glass.

†Typical range of Taylor cone stability with a spray solution of 75% methanol, 2% Acetic acid, using no sheath or curtain gas. Due to experimental variability actual performance may differ considerably from the stated value(s).

Metal TaperTips

Part Number	Tubing OD Tip ID (μ m)	Flow Range μ l/min	Tubing Length (cm)	Pieces per Pkg.	Price
MT320-50-35-5	320/50	0.2-1.5	3.5	5	
MT320-50-5-5	320/50	0.2-1.5	5	5	
MT320-100-35-5	320/100	0.5-2.0	3.5	5	
MT320-100-5-5	320/100	0.5-2.0	5	5	