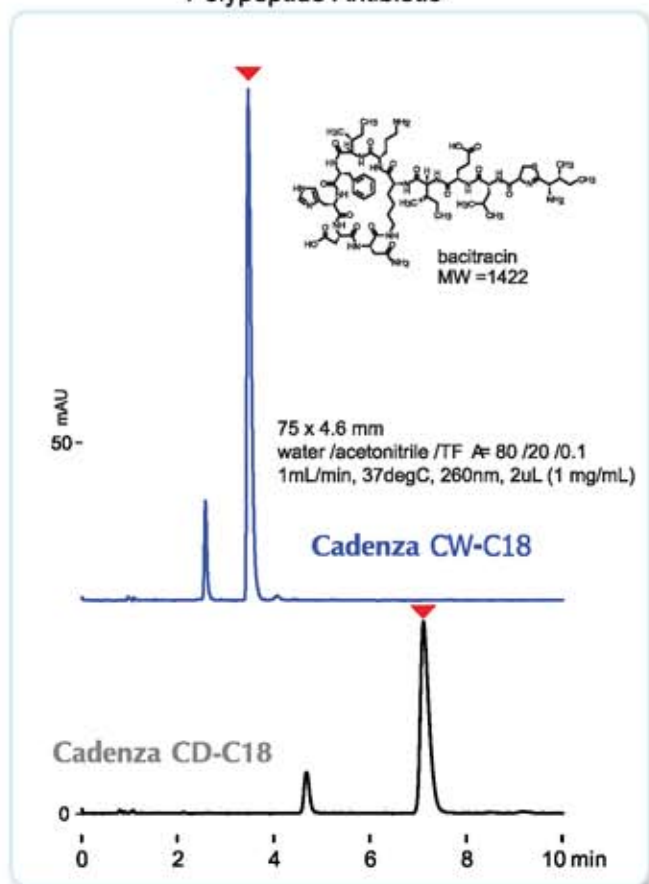


Cadenza CW-C18

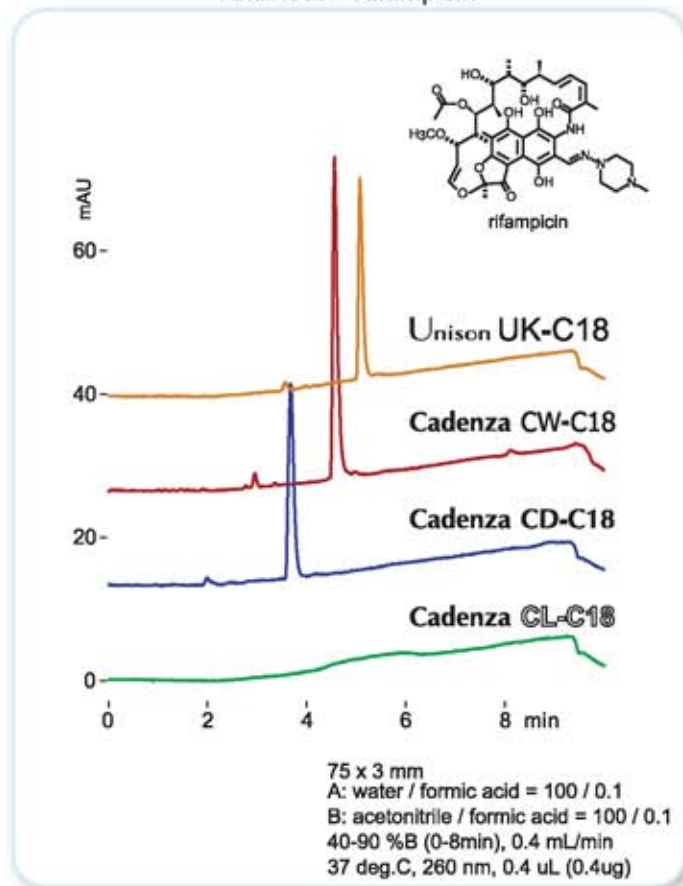
High Throughput, Basic Compounds

Cadenza CW-C18 is a novel wide-pore ODS phase designed for small molecule analysis. It can be used to decrease analysis time and improve peak shape of basic drug compounds.

Polypeptide Antibiotic



Antibiotic - Rifampicin



Analytical Columns

Semi-Prep Columns

Prep Columns

Cadenza CW-C18 3 µm	ID (mm)	Internal Diameter						
		1.0	2.0	3.0	4.6	6.0	10	20
		10		CW020	CW030	CW000		
20		CW029	CW039	CW009				
30	CW011	CW021	CW031	CW001	CW061	CW0P1		
50	CW012	CW022	CW032	CW002	CW062	CW0P2	CW0Q2	
75	CW013	CW023	CW033	CW003	CW063	CW0P3		
100	CW014	CW024	CW034	CW004	CW064	CW0P4	CW0Q4	
150	CW015	CW025	CW035	CW005	CW065	CW0P5	CW0Q5	
250	CW016	CW026	CW036	CW006	CW066	CW0P6	CW0Q6	
500				CW007				

Guard Cartridges

Size	Code	Pieces
1mm	GCCW0C	3
2-6mm	GCCW0S	3
10mm	GCCW0M	2

Guard Holders

Column Coupler Included	
1-6mm	GCH01S
10mm	GCH02M