

# Protocol for *D. melanogaster* Larvae Homogenization in the Bullet Blender™

The protocol described in this document is for the use of the Bullet Blender™ for the homogenization of *Drosophila melanogaster* larvae. This protocol does not specify a particular buffer - you may choose which is most appropriate for your downstream application (nucleic acid isolation, protein extraction, etc.).

**Materials Required:** *Drosophila* larvae, Bullet Blender™, homogenization buffer, pipettor, microcentrifuge tubes, and [0.5mm glass beads \(part number GB05\)](#).

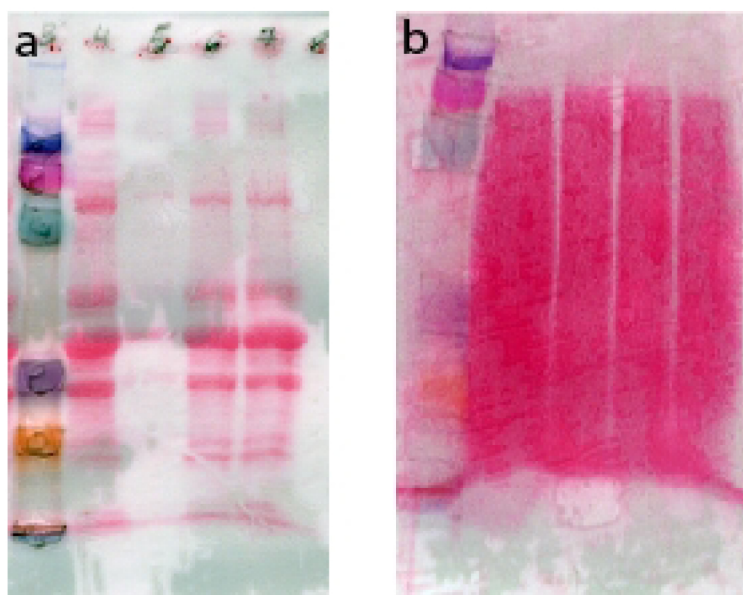
## Instructions

1. If you have not already, wash *Drosophila* larvae 3x with 1ml PBS or other buffer, as appropriate, to remove food, surface bacteria, and other contaminants.
2. Aspirate the larvae, or remove as much liquid as possible with a pipette.
3. Place 10-300mg of larvae into microcentrifuge tubes.
4. Add an equal mass of 0.5mm glass beads to the tube. One scoop  $\approx$  77mg.
5. Add 2 volumes of buffer for every mass of larvae (for example, with 100mg of larvae, use 200 $\mu$ l of buffer).
6. Close the microcentrifuge tubes.
7. Place tubes into the Bullet Blender™.
8. Set controls for **SPEED 8** and **TIME 3** minutes.
9. Remove tubes from the instrument.
10. Visually inspect samples, if homogenization is unsatisfactory, run for another two minutes at the **SPEED 10**.
11. Proceed with your downstream application.

## SAFETY NOTE!!!

**When using a centrifuge to separate your homogenate from the debris and beads, make sure your tubes are balanced.**

## TYPICAL RESULTS



Ponceau-stained protein gels. 35mg of larval *Drosophila* epidermal tissue was homogenized with a pestle (a) or a Bullet Blender Blue (b). Tissue was pelleted, 30 mL of 2x Laemmli buffer was added, and 1/3 scoop of 0.5 mm zirconium silicate beads was added. Samples processed in the Bullet Blender were homogenized for 2 minutes at speed 8. Protein extraction is increased dramatically when the samples are homogenized using a Bullet Blender. Data courtesy of Laura Stevens at RPI.



**Scientific Instrument Services, Inc.™**

1027 Old York Rd. Ringoes, NJ 08551-1039

Phone: (908)788-5550

www.sisweb.com

Fax: (908) 806-6631